



TUTUKAKA MARINA MANAGEMENT TRUST

R.D. 3, Whangarei 0173

Email: marina@tutukaka.co.nz

Telephone 09 434 3441

Website: www.tutukaka.co.nz

Tutukaka Marina Newsletter

July 2023

Note from the TMMT Chairperson:

Hi to our valued Berth Holders, renters, commercial operators and community-wide stake holders,

We are nearly there with the Marina repair and improvements; our staff have done a fabulous job carrying out their normal duties AND managing this huge project. Finding berths, assisting the Total Marine crew with planning, shifting boats, tidying the carpark etc - great job.

Trustee and Treasurer Lester Sherman has been a beacon of stability for us - keeping an eye on the costs, managing the cash flow, forecasting the debt and overseeing the bills that need to be paid. For those of you who don't know Lester he is our Tutukaka Coast Residents and Ratepayers association- appointed representative and has proven to be invaluable to us.

When completed we will have a fully compliant Marina to the latest engineering specifications by Rob Brown of Shorewise Engineering with benefits to berth-holders which include compliant facility assessment reports, increased structural integrities and continued support from Insurers from a marina and vessel perspective.

To recap: after the Hunga Tonga Hunga Haapai tsunami event our marina had to be reinstated to the latest Standards with steel piling and hinged Fuel Jetty designs. The Trust had plans for the winter of 2022 to complete L, M and Breakwater pile / pier sleeving project but were sidetracked by the need to completely rebuild from the Jan 15th 2022 event. The Insurer would have completed a "like for like" replacement but, on the advice of Shorewise Engineering, the Trust was strongly obligated to improve and strengthen to a standard to 1) create a more robust, compliant structural facility 2) to make safe for users and vessels.

We have two major issues remaining: the southern breakwater has to be redesigned along with a new main channel in the marina basin to lessen current speed in the marina if another major surge were to occur. The Trustees will advise as these issues unfold.

Also, our asset valuation resulted in a shocking increase (another whammy) which we are negotiating. Insurance and particularly coastal Insurance is going to substantially increase after all the weather events so we will see what happens.

Great work has been done by the contractors and it is an exciting time for folks to shortly get back on their original berths. I look forward to a job completion / opening date and a celebration for all berth holders to attend in due course!

On behalf of the TMMT Trust board, a big “Thanks” to everyone for their patience and in particular those of you who have been able and willing to Berth elsewhere to help out during the rebuild.

Regards,
On behalf of the TMMT
JK
Chairman

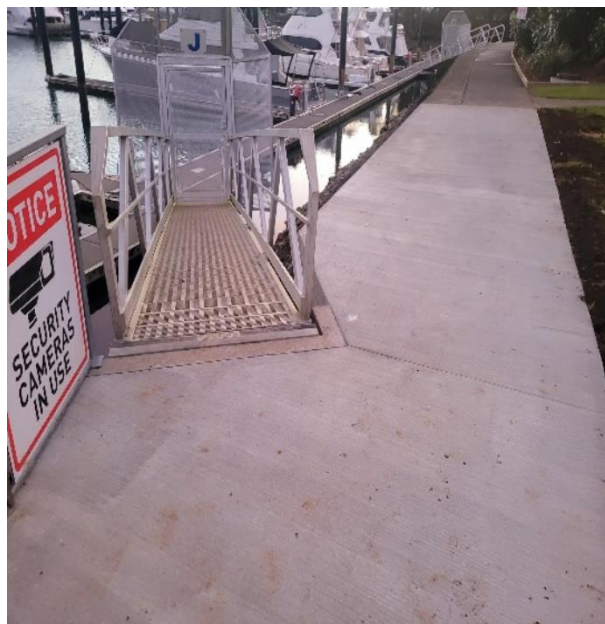
Rebuild update

It has been a year and a half and the Trustees have gone through many stages: initial cleanup, planning & engineering, funding / finance. Now the Rebuild is almost complete, signed off and ready for summer!

J pier

The bridge to J pier at the game club end has been lifted out (and now reinstalled) after the attachment point (abutment) was repaired and anchored back securely to the concrete foundations. This was showing signs of scouring and a gap was appearing between the concrete path and the bridge abutment following the Tsunami.

Right: completed J-Pier abutment



L pier

This pier has now been completely rebuilt and the bridge is back in place. The power pedestals are being positioned and will be lived up once the plumbing has been completed. We will also supply new temporary ropes to all berths to enable boats to get back home in due course. Very positive progress!



Left: completed L-Pier rebuild



Left: New finger on L Pier

Northern Breakwater

Below: Newly repaired Breakwater



The combination of the Tsunami and then cyclone Gabrielle created some serious damage, scour and loss of material from the northern breakwater especially the section out beyond the commercial wharf. We have had the areas repaired, new boulders, metal added plus geotextile fabric used to help retain the material from further scour, we also needed to get the gate repaired! These Breakwater repair specifications were engineer approved.

Our work extras

While the barge and team are here, we are taking the opportunity to use them to tidy up a few other areas at the marina such as...

Diving cleanup

Part of the rebuild job involves using commercial divers to do a final clean-up of the seabed to ensure that there is no debris left that could cause issues in the future. There will be some restrictions on boat movements while divers are in the water (as previously) and we will probably need to move a few boats around to enable the barge access to lift any major items clear. This work is scheduled for four days beginning **Monday August 7th**.

Article in Magazine Business North

Check out the following link for an excellent article on the Tutukaka rebuild:

<https://digitalpublications.online/waterfordpress/business-north-august-23/4/>

Carpark

Very soon the berth holders' renters and visitors will be able to park at D and E pier again once the materials and fencing have been cleared away.



Sculpture

You may have noticed some activity on the green in front of the mast from the "Tui". This is the location of a new bronze sculpture by well known local artist Sue Dinkelacker and is of Rob Webb (from Bird Rescue in Whangarei) and Albert the albatross being released back in 2005.



Cert of currency

Thanks for all those who have sent through their insurance info. We do only require to see a certificate of currency rather than the entire policy. The C of C shows the expiry date and the amount of 3rd party cover (10m) which are the important bits for us.

EWOF

Thanks also to all those who are keeping their EWOF up to date and forwarding this info to us. Remember you must have an EWOF to leave your vessel plugged in when there is no one on board. No EWOF could also result in an insurance claim being denied if there was an issue / fire.

Summer Markets on the Tutukaka Green

Summer market will be running again this summer! They are being looked after now by Kelly Moselen who has taken over from Jo in running these popular events. Dates are being locked in and they should be a lot of fun for locals and visitors alike throughout summer.



Pizzeria

Brenton, Helen and the Woodfired Dining team have been cooking up a storm. They are operating 7 days and are open from early to late with a great range of cabinet food, fantastic coffee and, of course, amazing pizzas. They are in the process of adding a new roof to the deck area to improve their seating area so make sure you pop by for a bite to eat and a hot and/or cold drink.

MARINA
Woodfired Dining 

Boat ramp

The existing damaged pontoons have now been replaced at the public boat ramp on the right side as part of the rebuild so will be in good shape for the coming season.



Special Levy options

A big “thank you” to everyone who have already paid their special purpose levy and a reminder to others to please let us know your payment option choice before **August 31st**.

Thank you from the Trustees and Staff at Tutukaka Marina

